

*"It is in dying  
that we are born  
to eternal life."*



ST. VINCENT  DE PAUL  
CATHOLIC CEMETERY

*The 2014 Expansion*





# Connecting the Past & the Future

## *Our Ministry*

The St. Vincent de Paul Catholic Cemetery exists to ensure proper interment, memorialization and perpetual care in the Catholic Church's tradition of the corporal works of mercy. Ultimately, we are here to comfort those who mourn and provide a thoughtful space for worship, prayer, and ministry to the bereaved. We offer meaningful opportunities for parishioners, other families, and the community to honor loved ones, including a special service of remembrance each Memorial Day.

## *Our History*

The first records of interment date back to 1856, two years after the founding of St. Vincent de Paul Catholic Church in Osseo. Through the years, the Cemetery has provided opportunities for parishioners and other families to honor the lives of their loved ones. Today, almost 3,500 are buried at St. Vincent de Paul Cemetery, and only a few available graves remain within the Cemetery's original boundaries.

## *Looking Ahead*

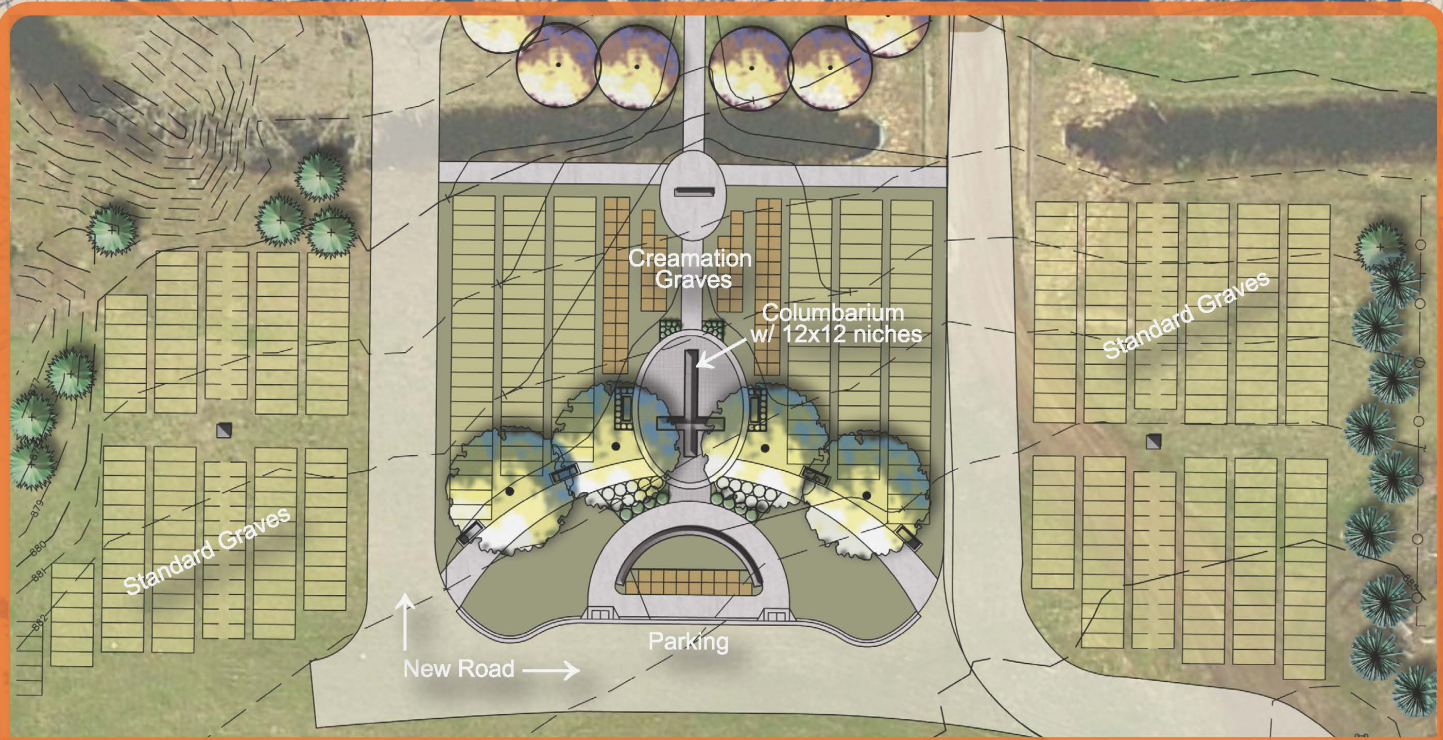
In 1962, the Parish purchased farmland acreage directly south of the established Cemetery, and in 2007, the Parish obtained approvals to expand. The expected completion date of phase one of our long-term expansion is May of 2014.

The expansion includes contemplative garden and courtyard areas with over 300 new traditional grave sites, more than 70 cremation grave sites, and a beautifully designed columbarium with over 300 niches for cremation. Additional monuments, walkways, and a new location for outdoor Mass and other liturgical services will provide special spaces to remember and commemorate loved ones. The newly-expanded Cemetery also includes special site selection options in the garden and courtyard areas.

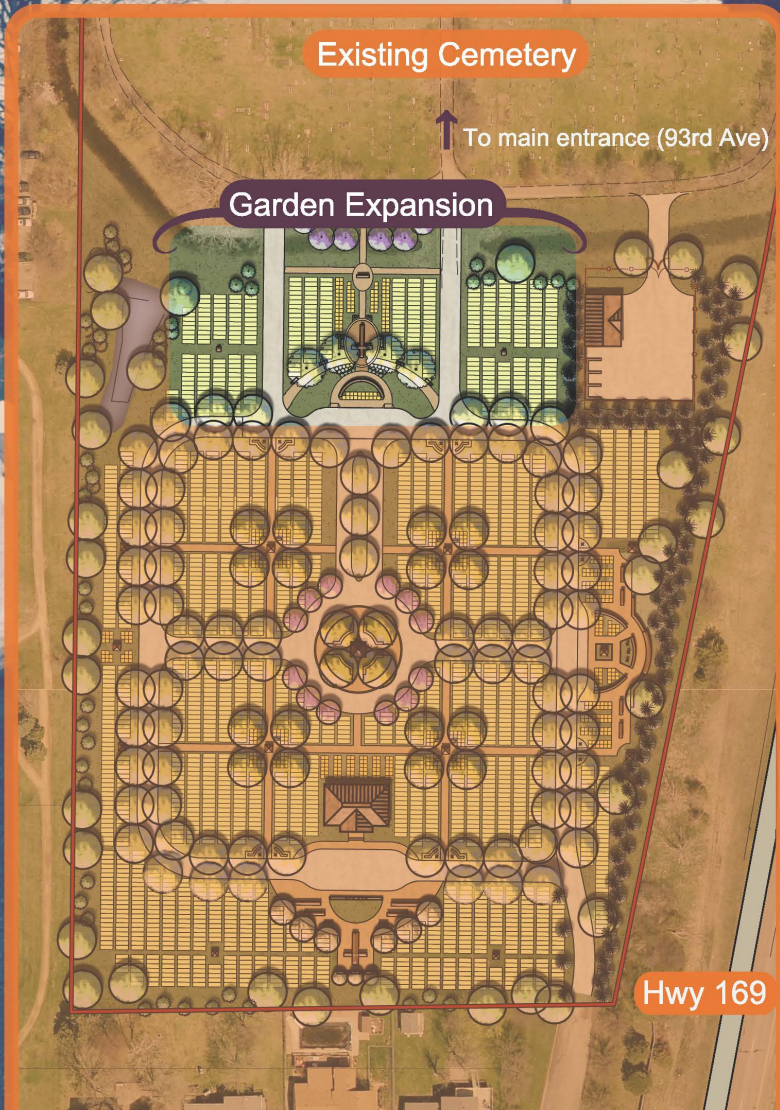
## *Learn More*

Please refer to the following pages for pricing, purchase incentives, terms and conditions. To receive additional information about the Cemetery's policies and developments, please contact us to add your name to our mailing list.





Phase One Garden Expansion



Overall Master Plan



# Conventional & Cremation Burial

## Interment Fees

Tiers	Adult >6'	Cremation 3' x 3'	Child 4' – 6'	Infant/Child Up to 3'	Miscarried Babies
April 1 - October 31	\$1,000	\$500	\$300	\$250	\$0
November 1 - March 31	\$1,100	\$600	\$600	\$550	\$0

**Add \$100 for interment scheduled for Saturday or Evening**

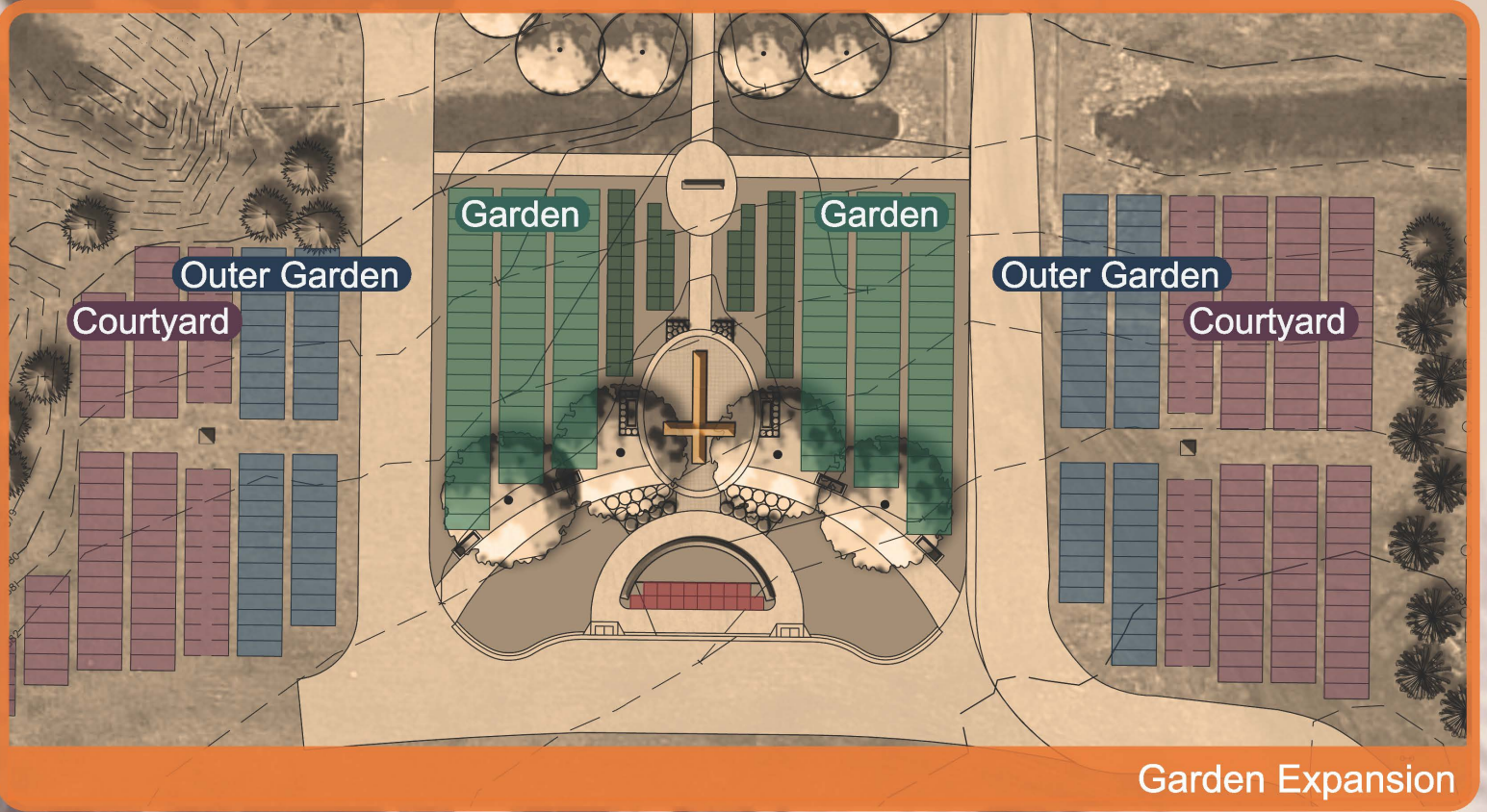
A 10% discount is being offered for burial rights purchased in the Garden Expansion January 1 – June 30, 2014.

Burial rights purchased by non-members of St. Vincent de Paul Church – add \$200 per conventional grave, and \$100 per cremation grave.

Effective January 1, 2014, an additional Right of Burial fee of 25% of the current grave price is charged for interment of a cremation urn in a conventional grave.

If there is a death prior to the grave becoming available, purchase price will be refunded, or exchanged for a site in the Original Cemetery.





## Garden Expansion

Subsections	Adult >6'	Cremation 3' x 3'	Child 4' – 6'	Infant/Child Up to 3'	Miscarried Babies
Garden	\$1,500	\$800	N/A	N/A	N/A
Outer Garden	\$1,050	N/A	N/A	N/A	N/A
Courtyard	\$1,050	N/A	N/A	N/A	N/A
Add'l Right of Burial	25% of above				

## Original Cemetery

All Remaining Graves	\$1,050	N/A	\$400	\$300	\$0
Add'l Right of Burial	25% of above				

Prices are subject to change without notice.





Cremation niches are spaces in the columbarium where the urn containing the cremated remains is placed. A columbarium is a self-standing granite structure with numerous niches.

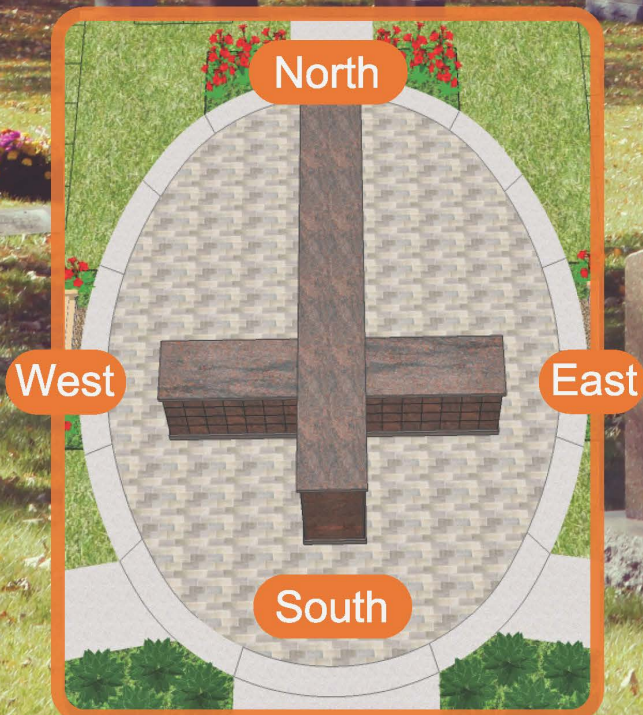
A 10% discount is being offered for burial rights (niches) purchased January 1 – June 30, 2014.

Burial rights purchased by non-members of St. Vincent de Paul Church – add \$200 per niche.

An additional Right of Burial of 25% of the current niche price is charged for inurnment of a second urn.

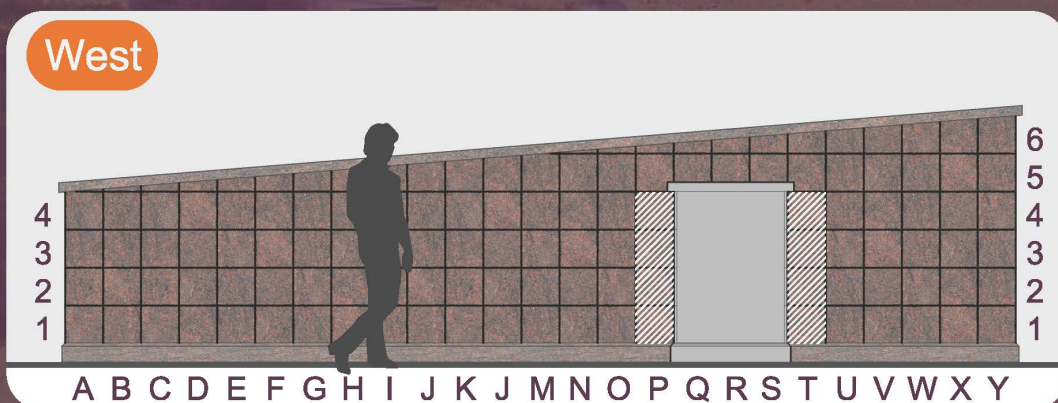
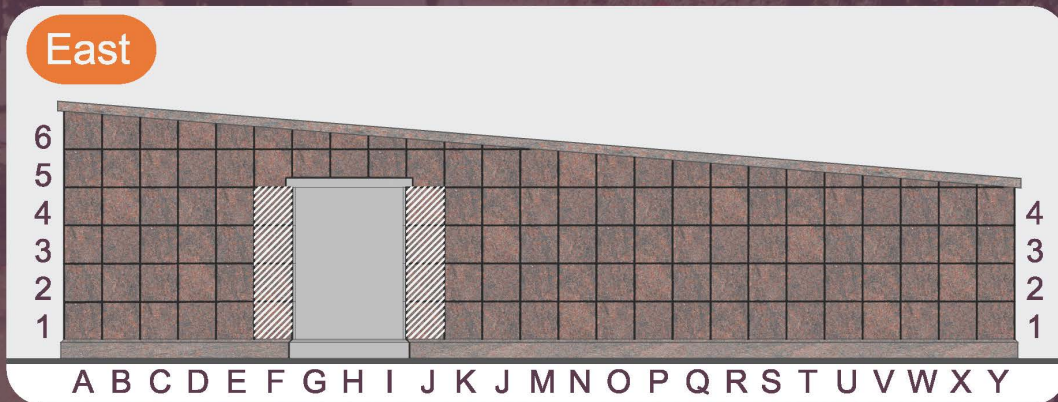
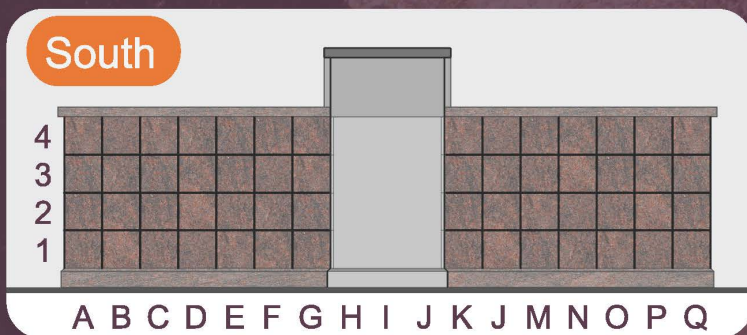
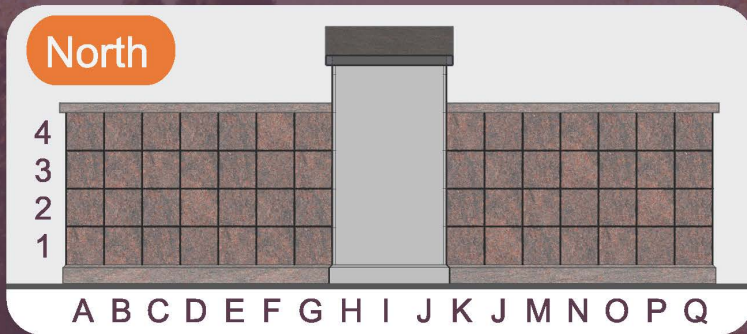
If there is a death prior to niches becoming available, purchase price will be refunded upon request.

Inurnment fee is \$500.





# Cremation Niche Inurnment



## Columbarium Niche Price

■ =Standard Niches (12x12x12)  
can hold one or two urns

Row 1	\$2,500
Row 6	\$2,700
Rows 2-5	\$2,900

▨ =Family Niches (12x24x12)  
can hold up to four urns

Row 1	\$4,900
Rows 2-4	\$5,200



St. Vincent de Paul Cemetery is owned and operated by St. Vincent de Paul Church located at: 9100 93rd Avenue North Brooklyn Park, MN 55445

To receive additional information about the Cemetery's policies and developments, please contact us to add your name to our mailing list.

**General Contact**

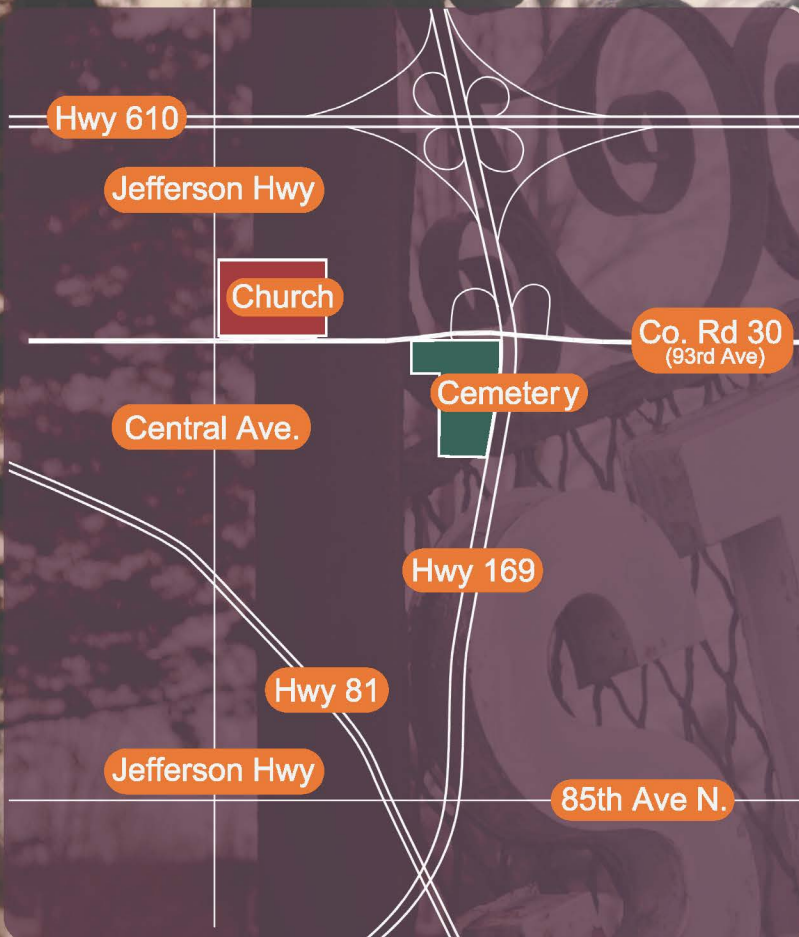
Phone: 763.425.2210  
Email: [cemetery@saintvdp.org](mailto:cemetery@saintvdp.org)  
Website: [saintvdp.org](http://saintvdp.org)

**Tess Eiden**

Cemetery Coordinator  
763-425-2210 ext. 412  
[tesseiden@saintvdp.org](mailto:tesseiden@saintvdp.org)

**Bob Phenow**

General Cemetery Caretaker  
and Interment Services  
612-741-6036



*Directions*

St. Vincent de Paul Cemetery  
8601 93rd Avenue North  
Osseo, MN 55369

**From the north on Highway 169**  
Right on 109th Avenue  
to Jefferson Highway  
Left on Jefferson Highway  
to 93rd Ave (Cty Rd 30)  
Left on 93rd Ave past the church  
Right, into the cemetery

**From the South on Hwy 169**  
Take 93rd Ave (exit on the right)  
At top of hill take a right  
Left into the cemetery

**From the East on MN-610**  
Exit West Broadway  
Left on West Broadway  
Right on 93rd Ave  
Cross over Hwy 169,  
Left into the cemetery

**From the West on MN 610**  
Exit Zachary Lane  
Right on Zachary Lane  
Left on 93rd Ave  
Continue past church,  
Right into the cemetery

**Option from Hwy 81**  
North on Central Ave through Osseo  
Right on 93rd Ave  
Right into the cemetery